

**CORNELL PUMP COMPANY****350 - 2100 GPM Model 4614M 50 - 450 Feet TDH****STANDARD SPECIFICATION**

Discharge - 4 inch discharge

Suction - 6 inch suction

Impeller - Semi-open, threaded, 8 vane: handles 1" solids

Volute - Right hand centerline discharge, eight positions

Mechanical Seal or Traditional Packing - Single tungsten silicon mechanical seal: Cycloseal® design, Run-Dry™ available

Materials of Construction

- Ductile iron casing, ductile iron impeller
- Other materials available

MOUNTING OPTIONS

- **Close Coupled Electric**
 - Cornell's Energy Efficient Design
- **Frame Mount**
 - Cornell F16
 - Cornell F18
 - Cornell F18DB
- **Engine Bracket**
 - Cornell EM16 (SAE 1, 2, 3, 4)
 - Cornell EM18 (SAE 1, 2, 3, 4)
 - Cornell EM18DB (SAE 1, 2, 3, 4)
- **Oil Filled Bearing Frame**
 - Available
- **Redi-Prime Self Priming System**
 - Available

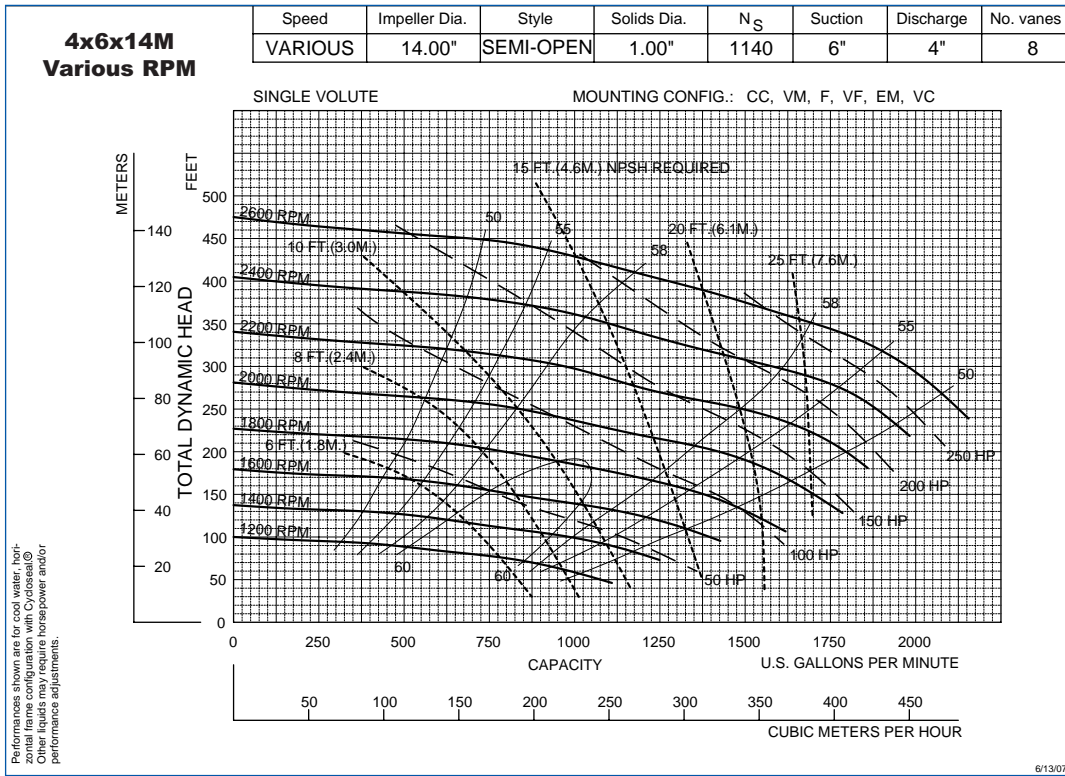
AVAILABILITY

- **Specialty Pump**
 - Cornell Pump Company will design and manufacture a variation of this pump specifically designed for your application

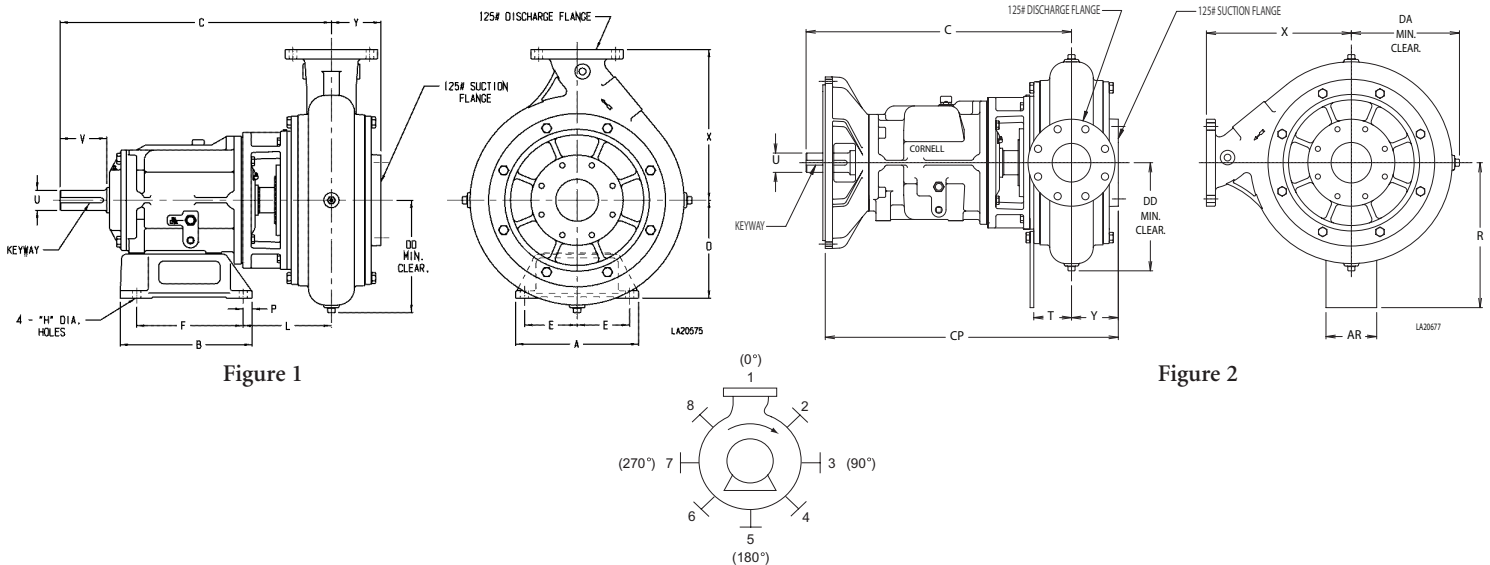
**FEATURES & BENEFITS**

- **Cornell's Tradition of Excellence:**
 - **Highest quality products**
 - **Experience**
 - Over 60 years in the centrifugal pump business
 - **Optimum Hydraulics**
 - In house engineering staff and test lab facilities
 - **Strong Local Dealer Support**
 - Our agricultural products are sold only through authorized dealerships
 - Dealerships provide full service to customers from sales to replacement parts
 - Dealers maintain and improve their knowledge at educational activities like Cornell's "Pump School"
- **Exceptional Design:**
 - **Efficiency**
 - Effectively converts energy into fluid flow and pressure
 - **Long Product Life**
 - Thick walled castings
 - Heavy duty shafts
 - 20,000 hour minimum bearing calculation
 - Replaceable wear rings and shaft sleeves

PERFORMANCE CURVES



Note: Curves also available in 1800 and 1200 RPM



PUMP DIMENSIONS

MOUNT	Fig.	A	AR	B	C	CP	D	DA	DD	E	F	H	L	LP	P	R	T	U	V	X	Y	Z	KEYWAY
F16	1	12	-	12.88	25.49	-	9.75	-	11.25	5.12	10.38	0.81	7.6	-	0.88	-	-	2	4.5	16	3.27	-	.50 X .25
F18	1	12	-	12.88	26.47	-	10.5	-	11.25	5.12	10.38	0.81	8.1	-	0.88	-	-	2.5	4.5	16	3.27	-	.62 X .31
EM16	2	-	8	-	25.49	26.75	-	11.25	12	-	-	-	-	-	14.41	3.3	2	-	16	3.27	9.25	.50 X .25	
EM18	2	-	8	-	26.47	27.75	-	11.25	12	-	-	-	-	-	14.41	3.3	2.5	-	16	3.27	9.25	.62 X .31	

Cornell Pump Company

P.O. Box 6334

Portland, Oregon 97228-6334

Web: www.cornellpump.com

Phone: (503) 653-0330 • Fax: (503) 653-0338

CERTIFIED TO ISO 9001:2000